

WEST MAPLE ST. SANITARY SEWER EXTENSION

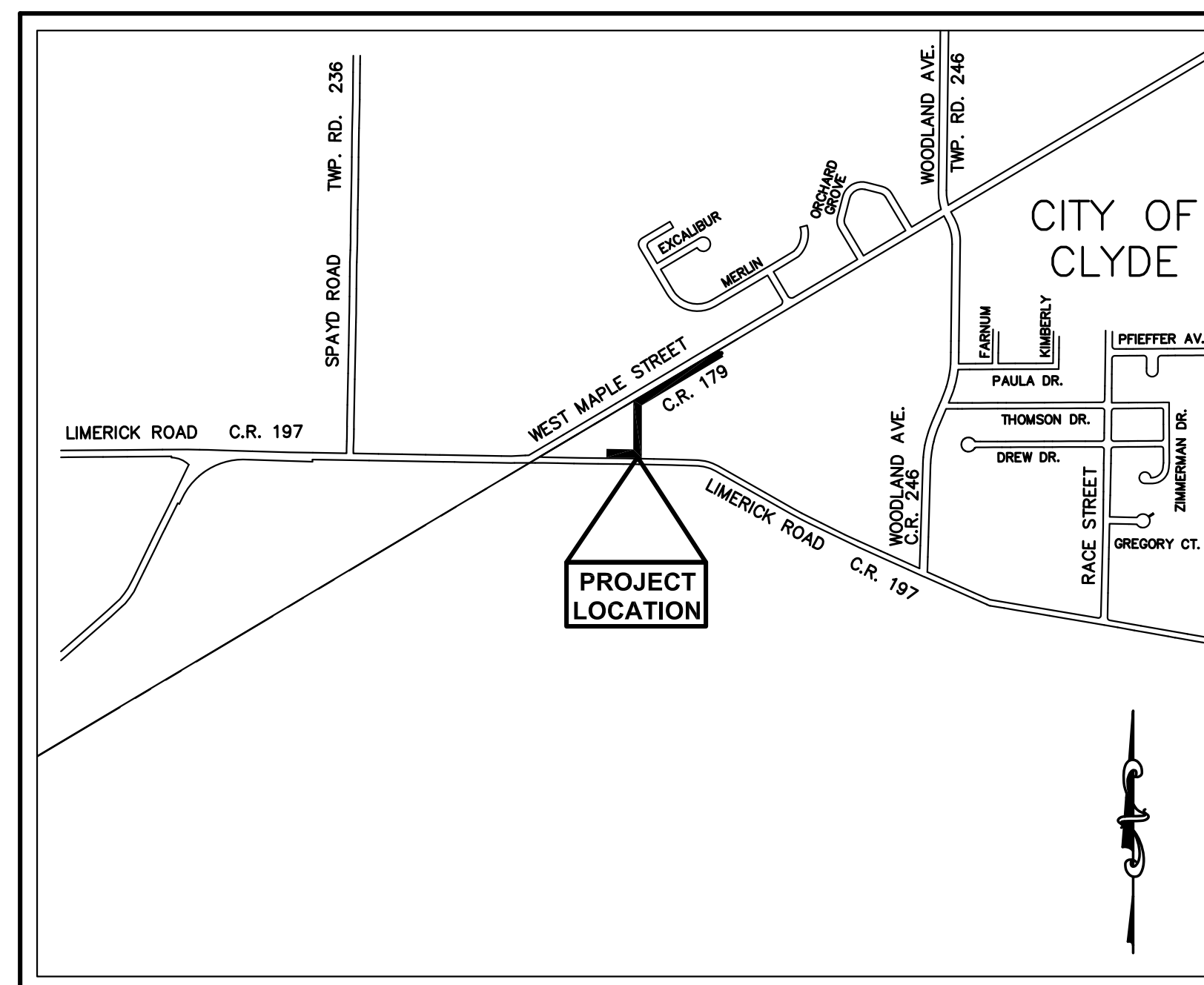
PROJECT NUMBER: 09-022

CITY OF CLYDE
SANDUSKY COUNTY, OHIO

APRIL, 2010

SHEET INDEX

TITLE SHEET	1
GENERAL NOTES	2
PLAN & PROFILE	3-5
STANDARD DETAILS	6



LOCATION MAP
NOT TO SCALE

CITY OF CLYDE OFFICIALS

HONORABLE MAYOR SCOTT BLACK
CITY MANAGER DANIEL E. WEAVER
FINANCE DIRECTOR CHRISTINE MAY
SUPERINTENDENT OF WATER TREATMENT PHIL FARRAR
SUPERINTENDENT OF WASTEWATER THOMAS BAUER
SUPERINTENDENT OF LIGHT & POWER KEVIN WRIGHT
SUPERINTENDENT OF SERVICE DEPT. RICK HARRAH
SUPERINTENDENT OF ENVIRONMENTAL SERVICES DON BALL

MEMBERS OF CLYDE COUNCIL

VICE MAYOR CAROLYN FARRAR
CLERK OF COUNCIL JANET DICKMAN
COUNCIL MEMBER GARY BEAMER
COUNCIL MEMBER KENNETH DICK
COUNCIL MEMBER STEVE KEEGAN
CITY SOLICITOR BARRY BOVA

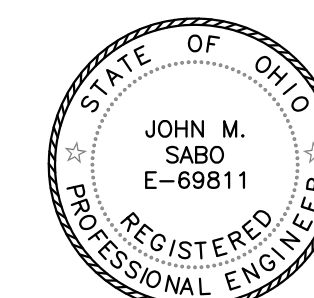
APPROVALS

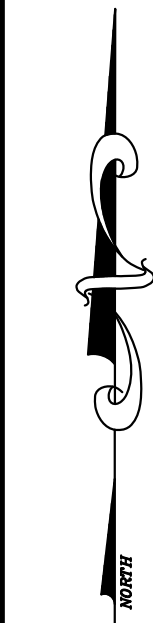
DANIEL E. WEAVER - CITY MANAGER

UNDERGROUND UTILITIES
TWO WORKING DAYS
BEFORE YOU DIG
Call... 800-362-2764 (Toll Free)
OHIO UTILITIES PROTECTION SERVICE
NON-MEMBERS
MUST BE CALLED DIRECTLY
OUPS REF. NO.: A916-602-597

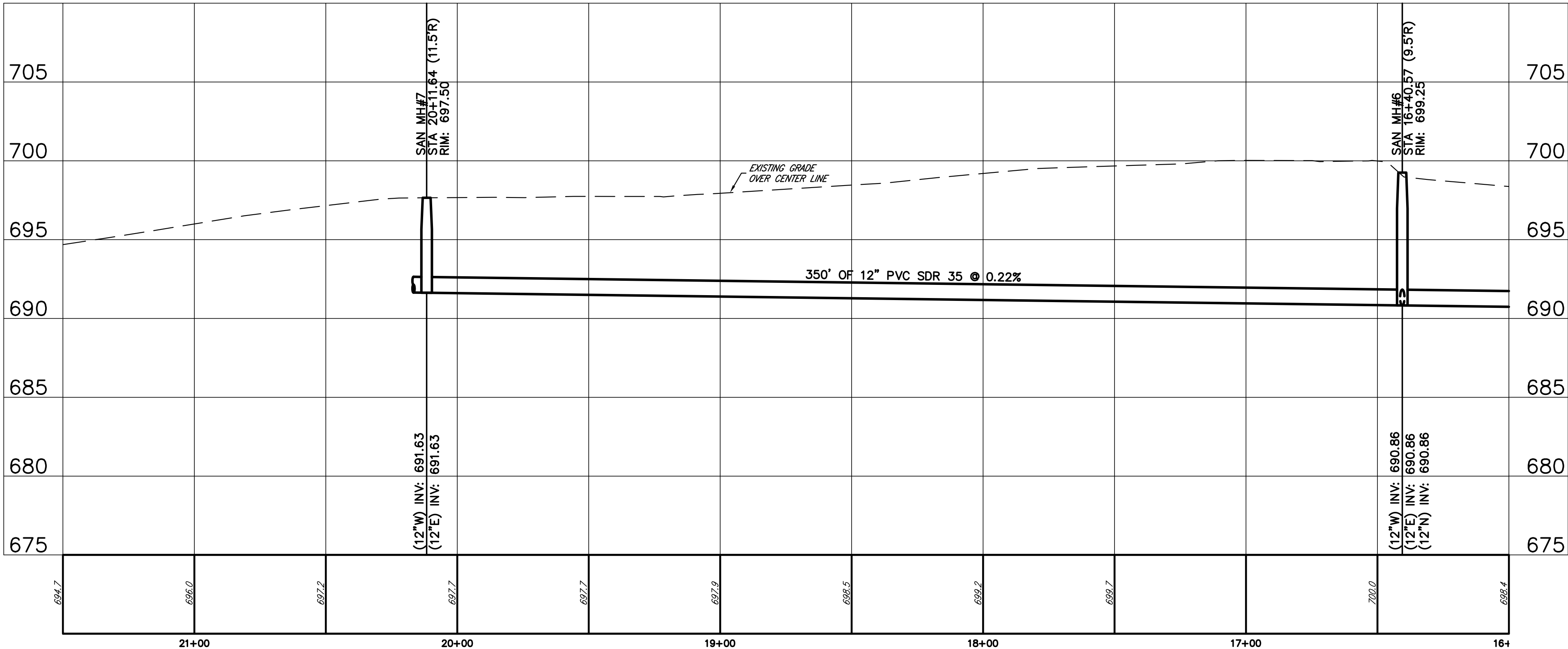


JOHN M. SABO, PE# E-69811

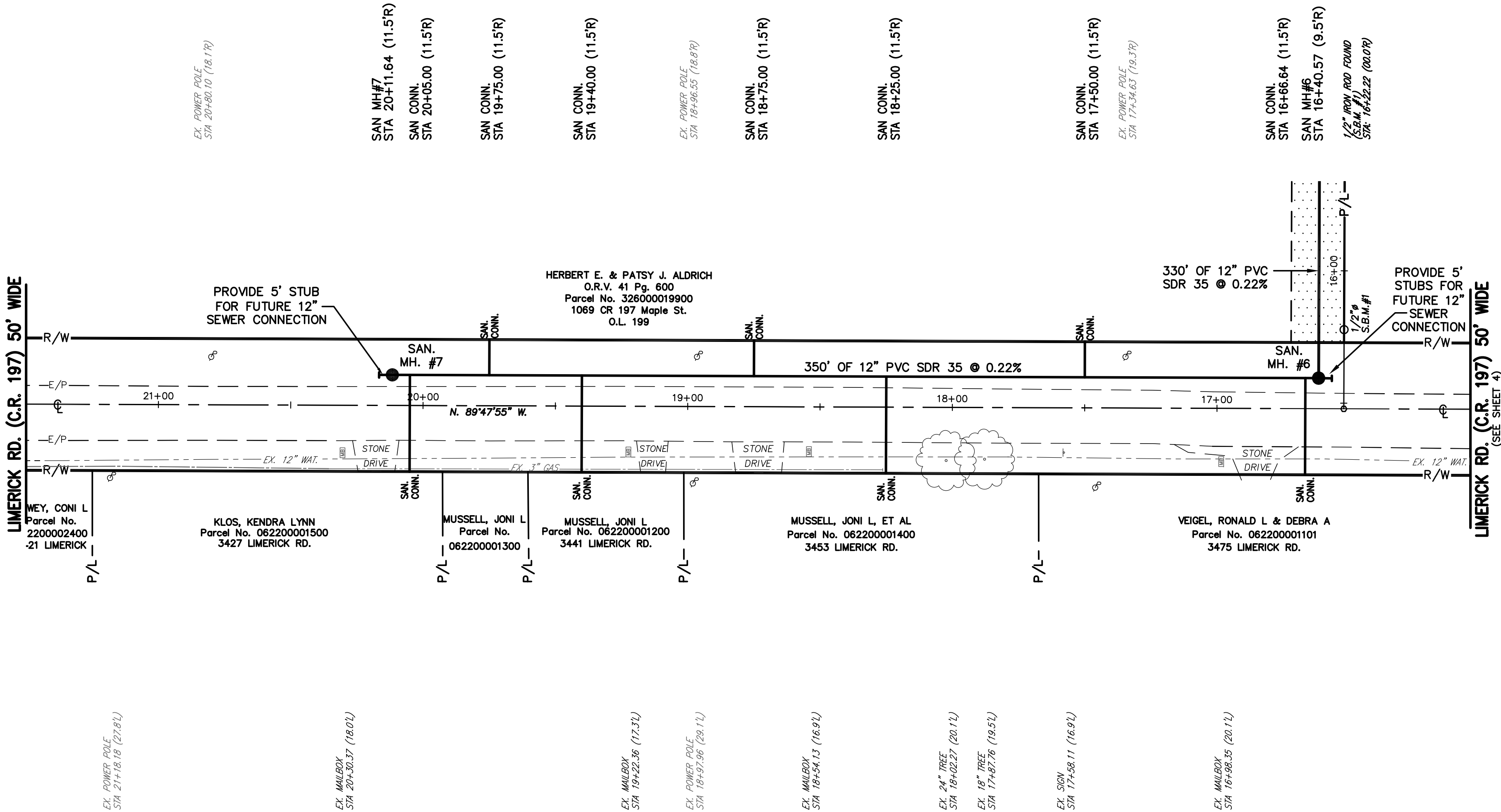





NOTE:
1. THE UTILITIES SHOWN ON PLANS ARE APPROXIMATE. CONTRACTOR SHALL VERIFY ALL UTILITIES IN THE FIELD AND NOTIFY ALL UTILITY COMPANIES PRIOR TO INSTALLATION OF THE SANITARY SEWER LINE.
2. ALL PROPOSED MANHOLE RIMS ARE TO BE SET FLUSH WITH EXISTING GRADE, UNLESS OTHERWISE NOTED.
3. ROOF DRAINS, FOUNDATION DRAINS, AND OTHER CLEAN WATER CONNECTIONS TO THE SANITARY SEWER SYSTEM ARE PROHIBITED.

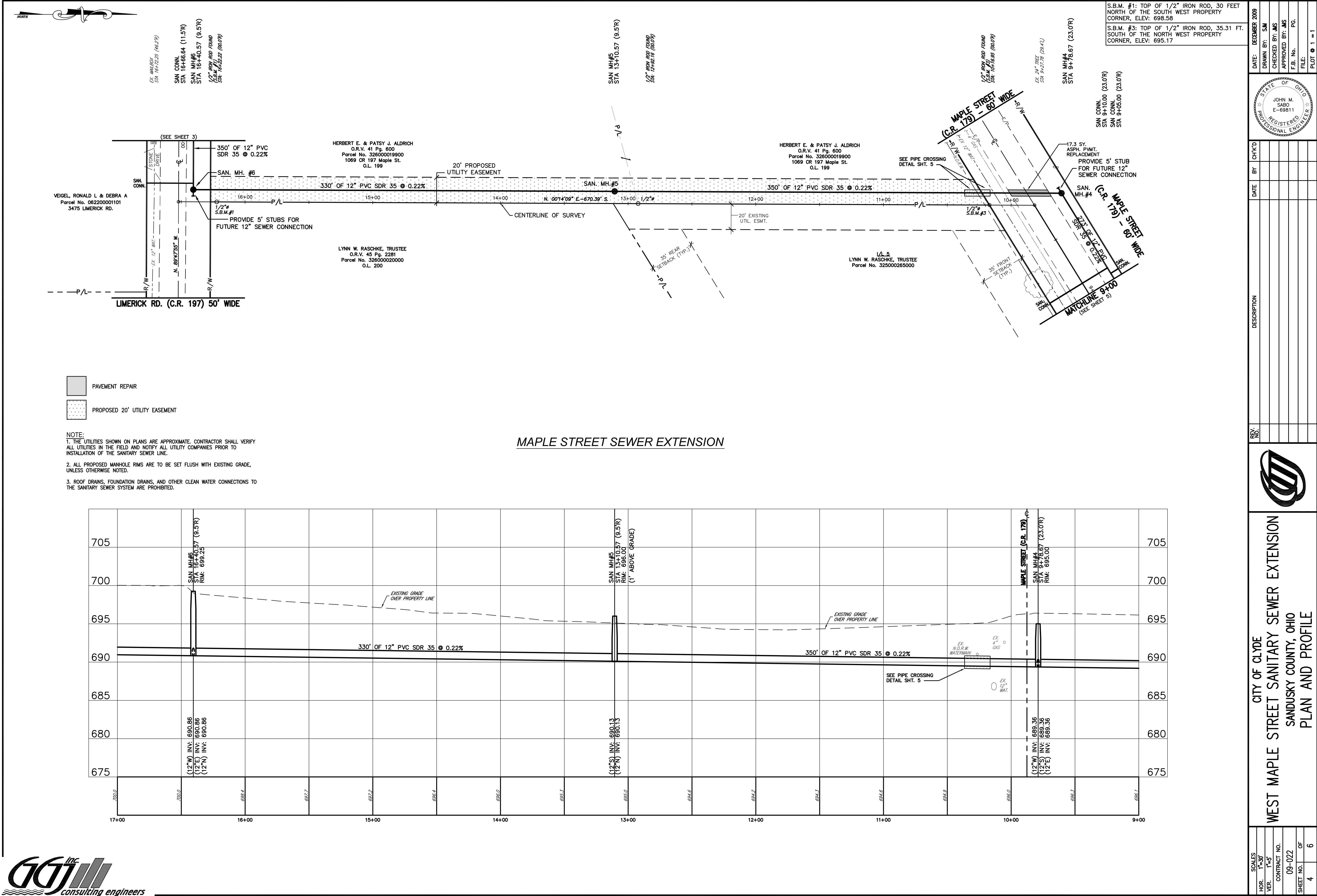


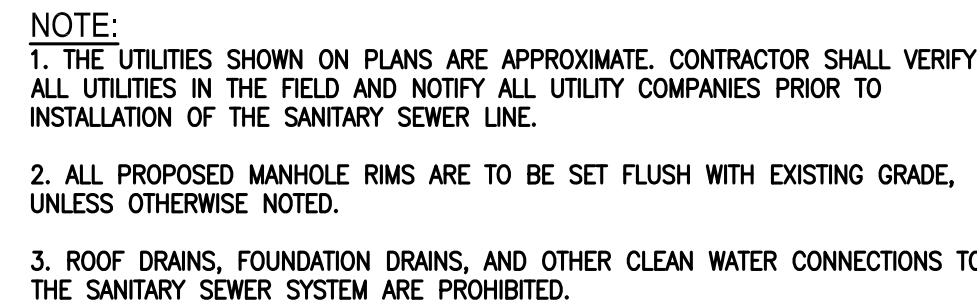
LIMERICK ROAD (C.R. 197) SEWER EXTENSION




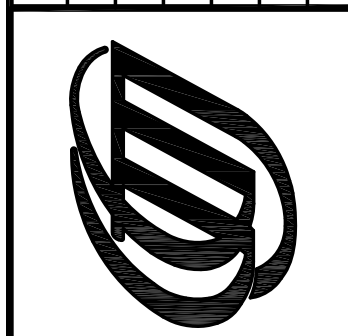
S.B.M. #1: TOP OF 1/2" IRON ROD, 30 FEET NORTH OF THE SOUTH WEST PROPERTY CORNER, ELEV: 698.58

CITY OF CLYDE			WEST MAPLE STREET SANITARY SEWER EXTENSION				REV. NO.	DESCRIPTION	DATE	BY	CHK'D	<div><div>STATE OF OHIO</div><div>JOHN M. SABO E-69811</div><div>REGISTERED PROFESSIONAL ENGINEER</div></div>	DATE: DECEMBER 2009	DRAWN BY: SM	CHECKED BY: JMS	APPROVED BY: JMS	F.B. No. PG.	FILE:	PLOT 1 = 1
SANDUSKY COUNTY, OHIO			PLAN AND PROFILE																
SHEET NO. 3			OF 6																
CONTRACT NO. 09-022																			
VER. 1"=5'																			



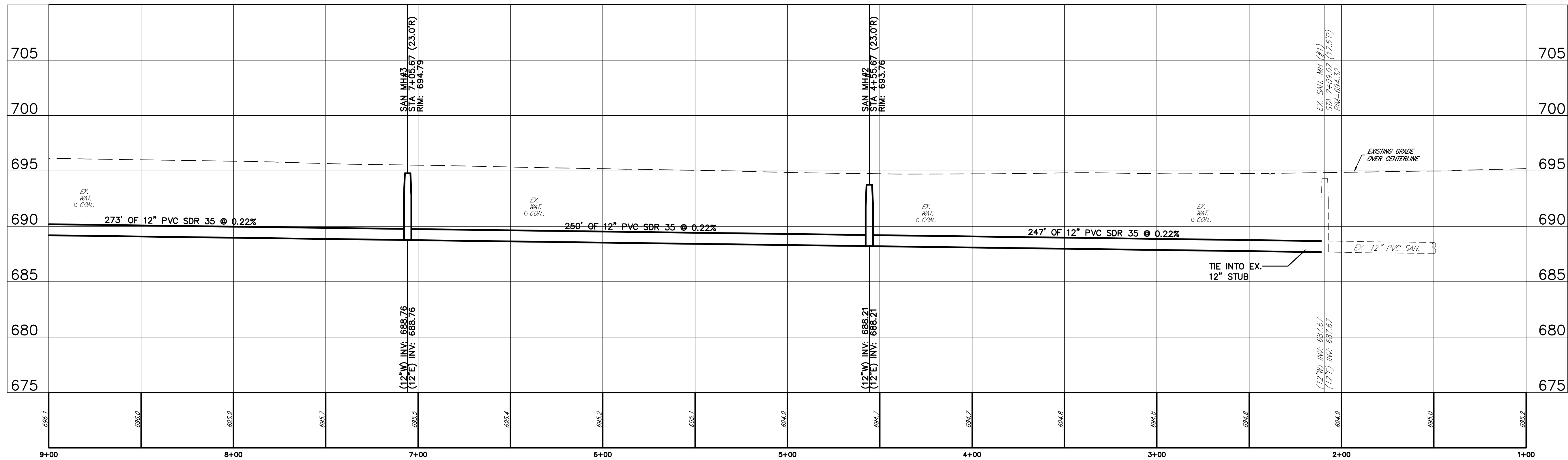


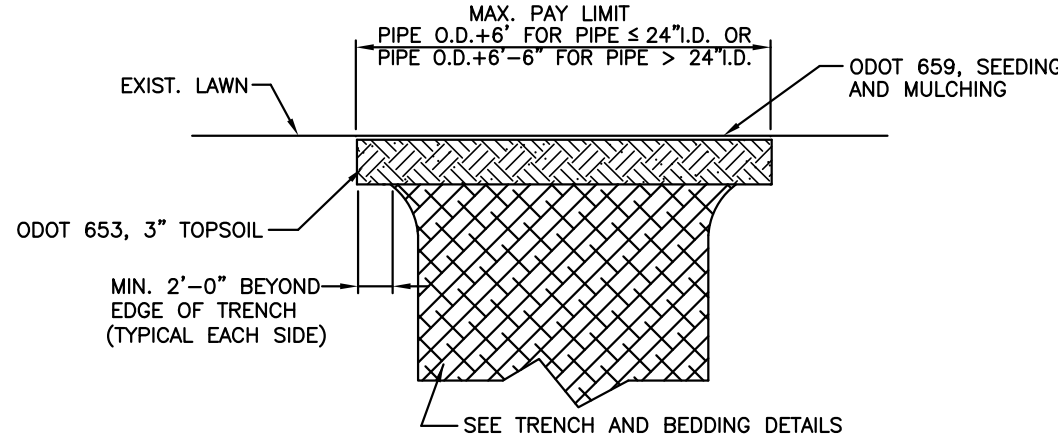
REV. NO.	DESCRIPTION	DATE	BY	CH'KD		DATE: DECEMBER 2009
						DRAWN BY: SM
						CHECKED BY: JMS
						APPROVED BY: JMS
						F.B. No. PG.
						FILE:
						PLOT 1 = 1



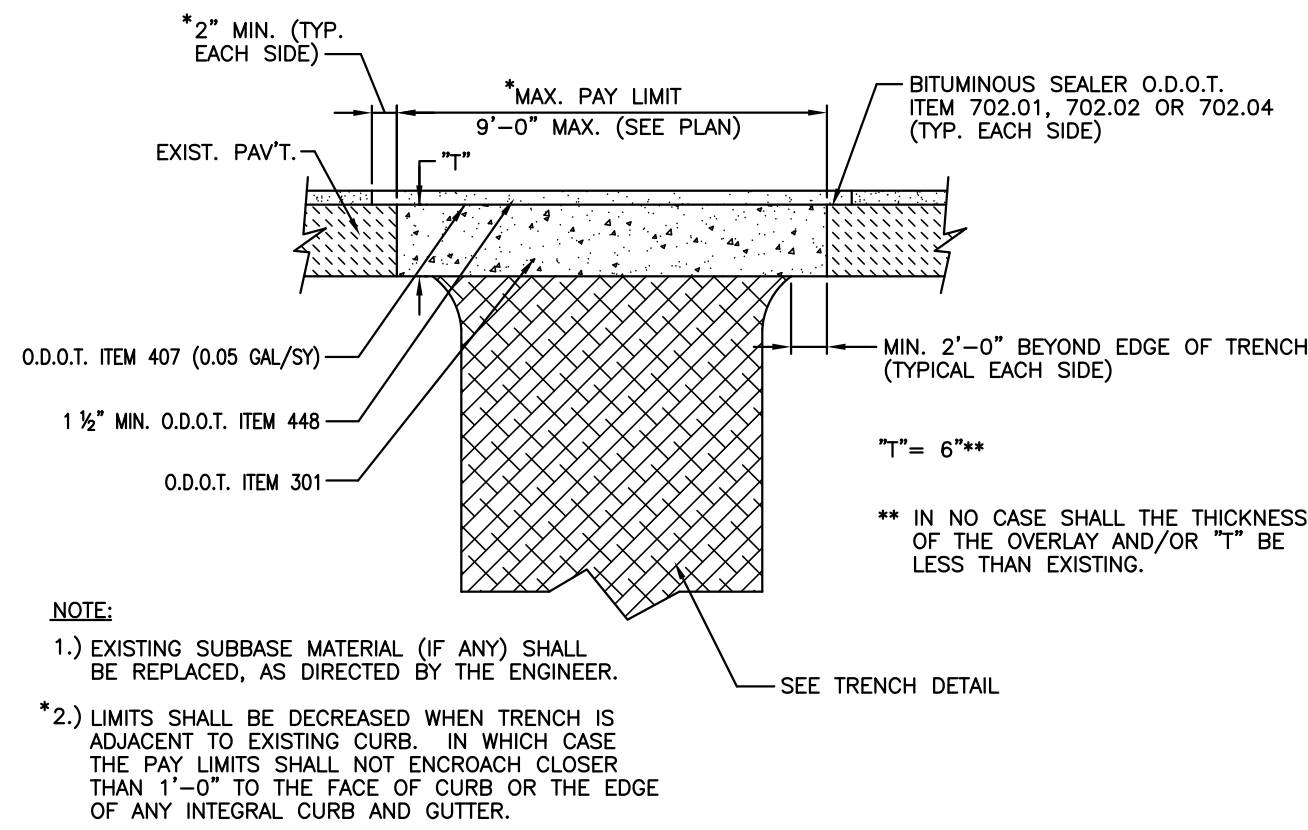
CITY OF CLYDE
WEST MAPLE STREET SANITARY SEWER EXTENSION
SANDUSKY COUNTY, OHIO
PLAN AND PROFILE

SCALES	
HOR.	1"=30'
VER.	1"=5'
CONTRACT NO.	
09-022	
SHEET NO.	OF
5	6

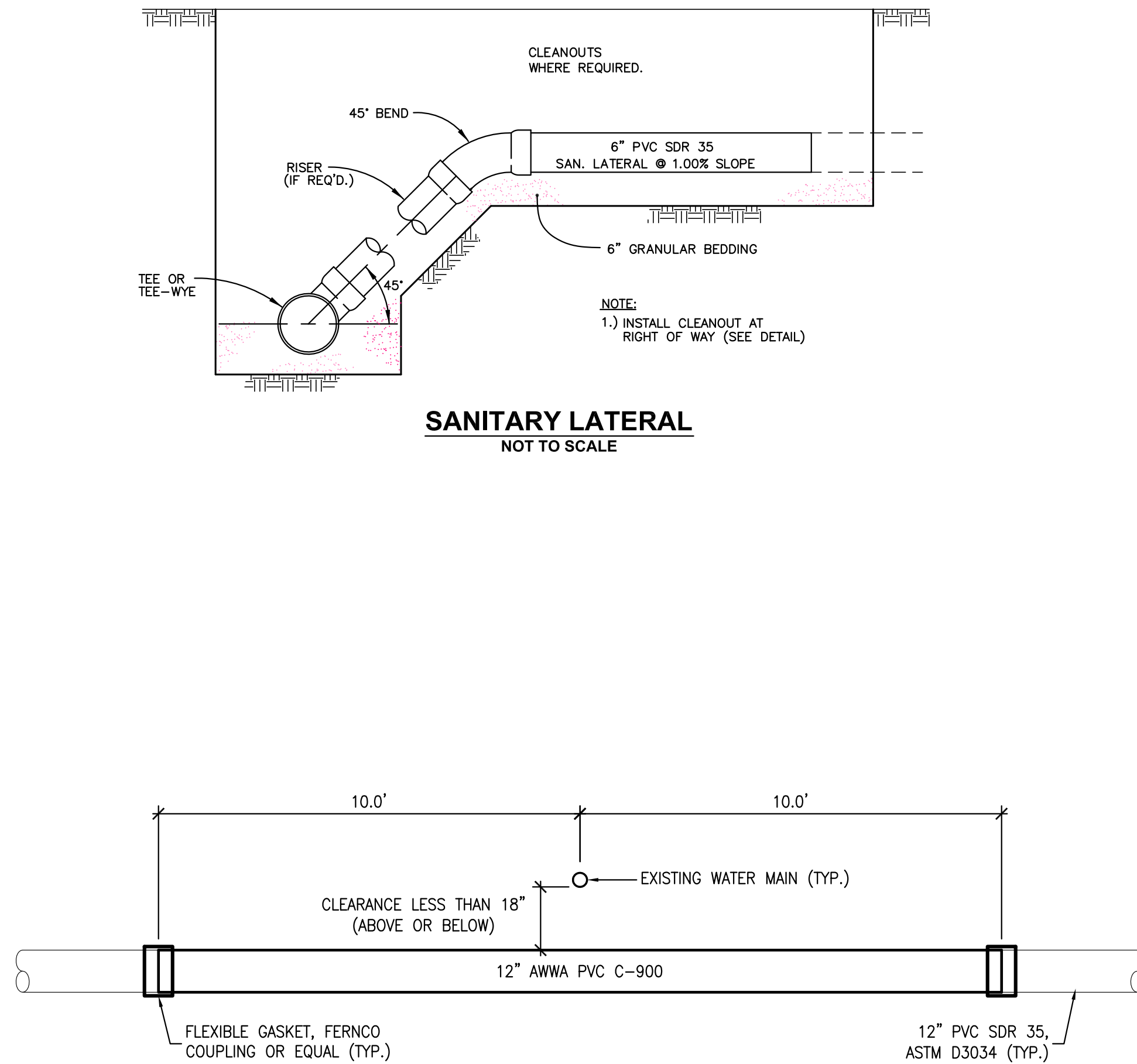




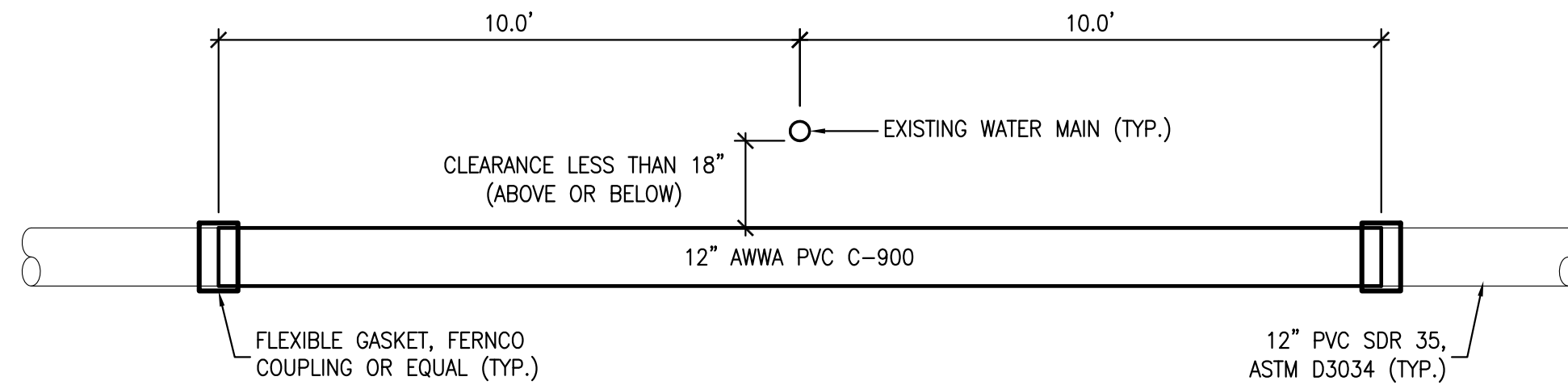
LAWN RESTORATION DETAIL
NOT TO SCALE



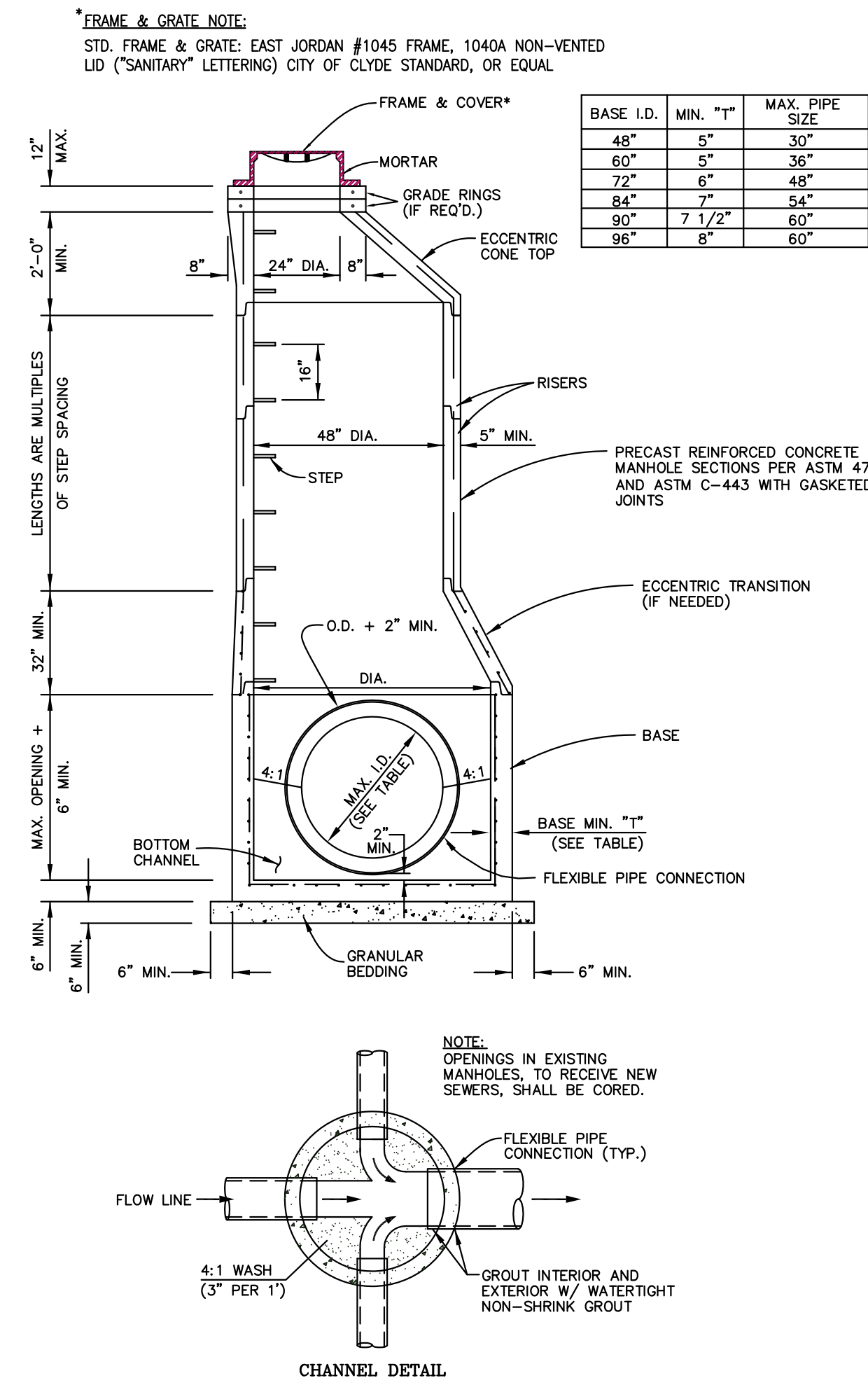
TYPE 'C' PAVEMENT RESTORATION
NOT TO SCALE



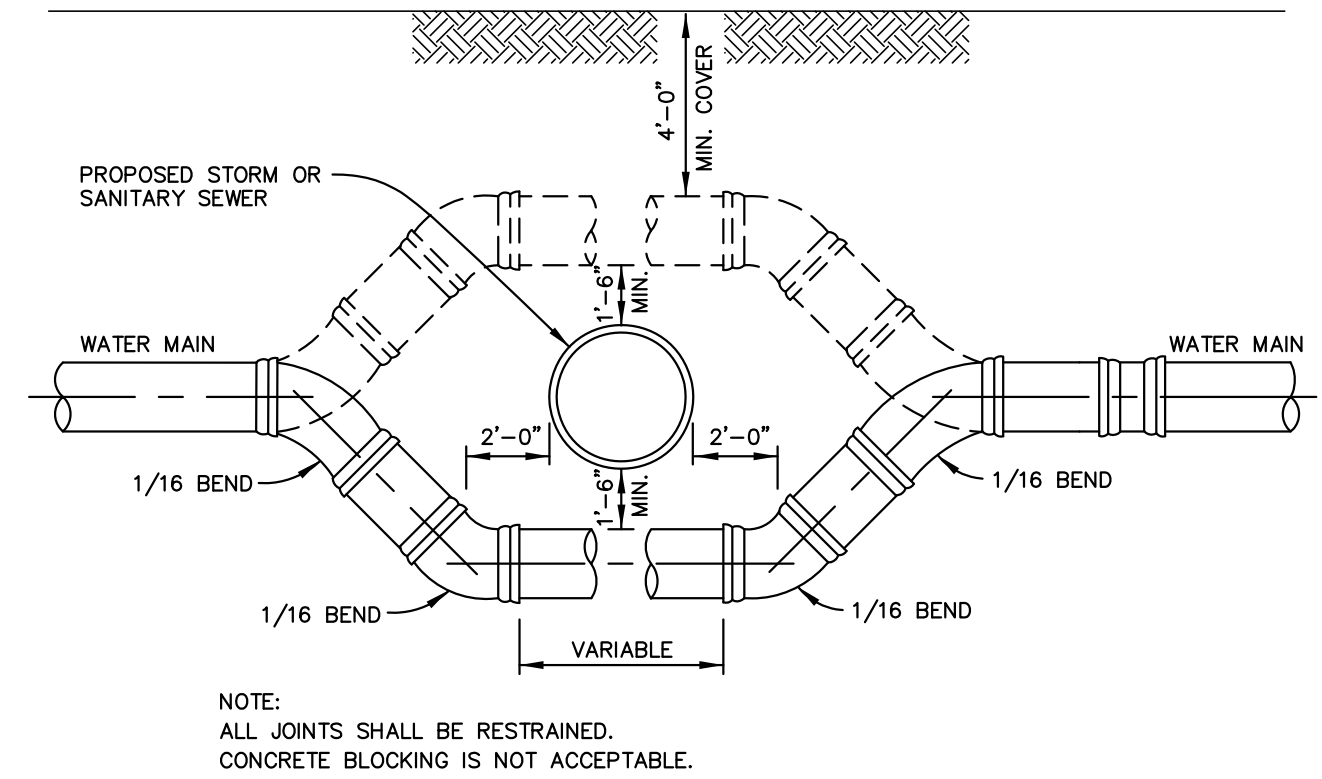
SANITARY LATERAL
NOT TO SCALE



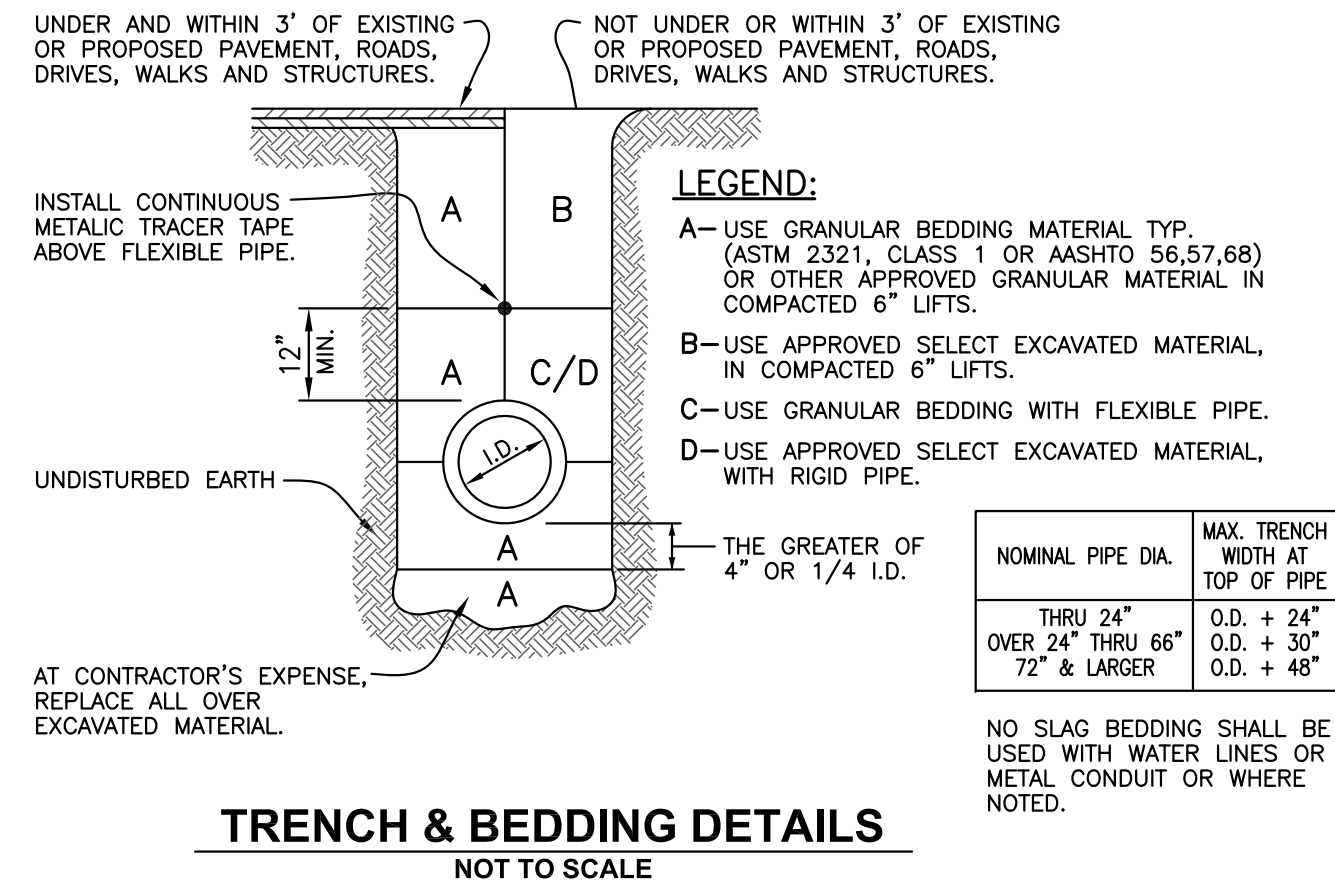
PIPE CROSSING DETAIL
NOT TO SCALE



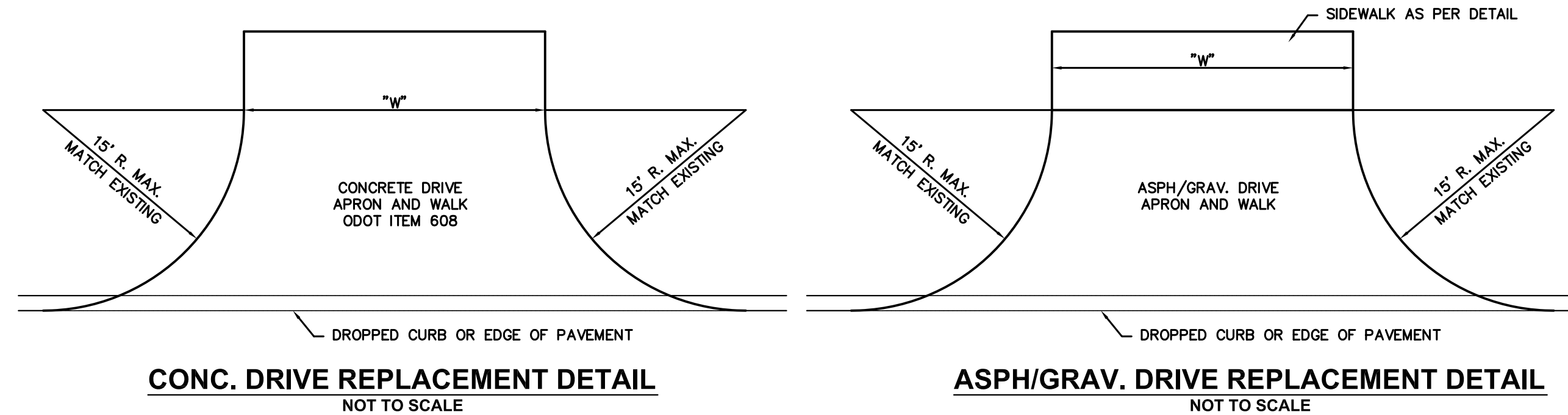
SANITARY MANHOLE
NOT TO SCALE



WATER MAIN OFFSET
NOT TO SCALE

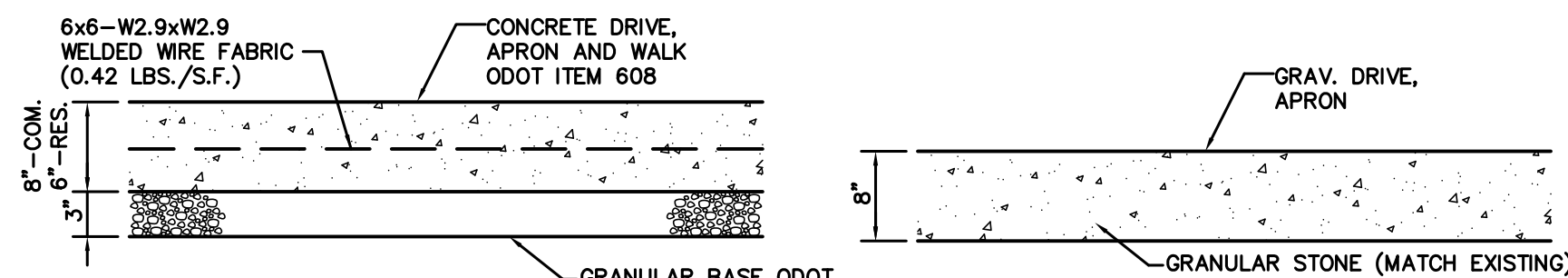


TRENCH & BEDDING DETAILS
NOT TO SCALE



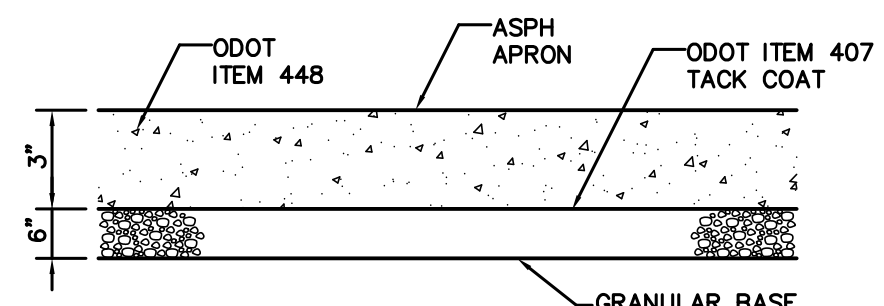
CONC. DRIVE REPLACEMENT DETAIL
NOT TO SCALE

ASPH./GRAV. DRIVE REPLACEMENT DETAIL
NOT TO SCALE

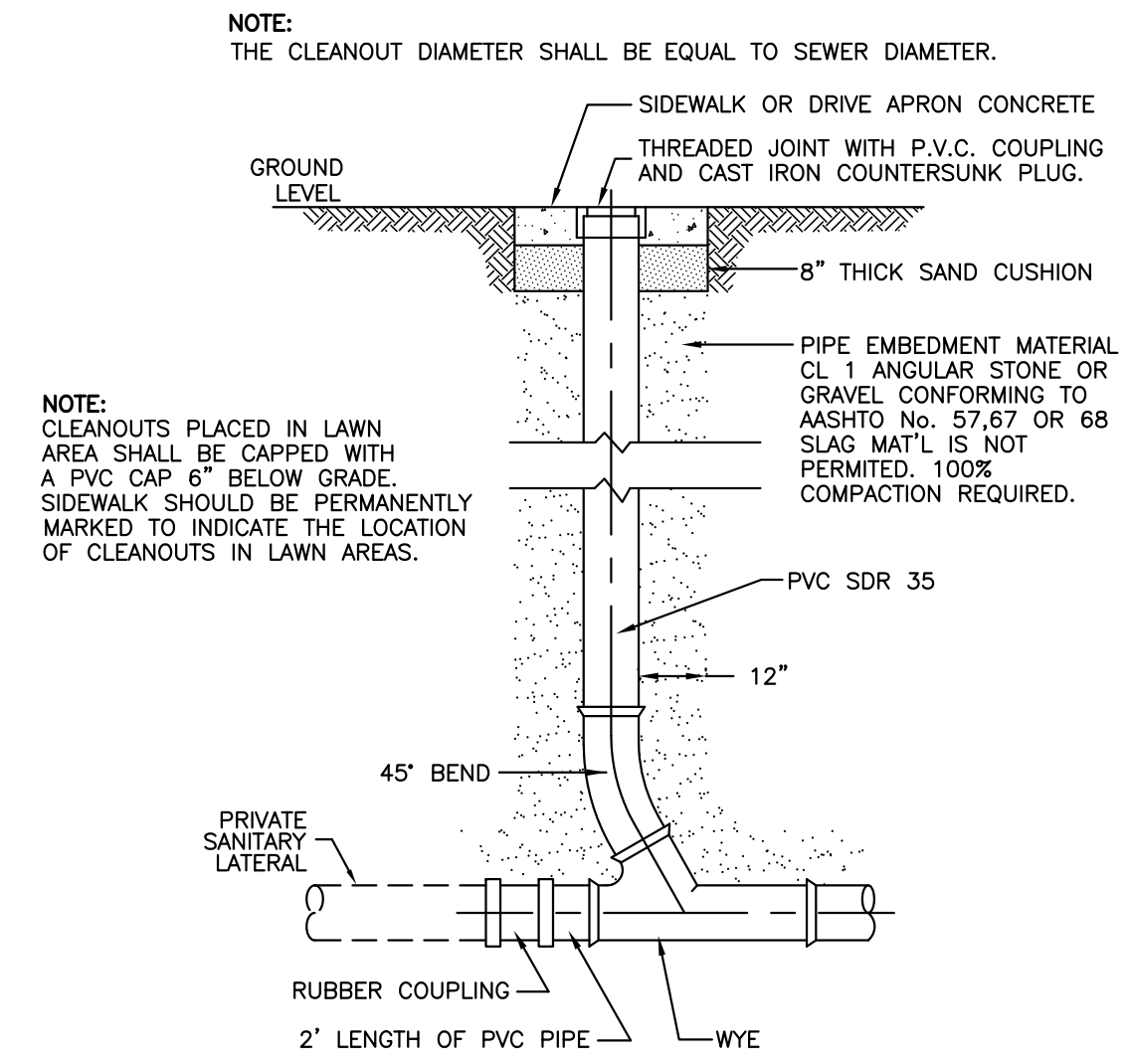


CONC. DRIVE APRON SECTION
NOT TO SCALE

GRAV. DRIVE APRON SECTION
NOT TO SCALE



ASPH. DRIVE APRON SECTION
NOT TO SCALE



SANITARY CLEANOUT
NOT TO SCALE